



# GCS- $\alpha$ -1 Polyclonal Antibody

<b>Catalog No</b>	YP-Ab-03897
<b>Isotype</b>	IgG
<b>Reactivity</b>	Human;Mouse;Rat
<b>Applications</b>	WB;CoIP;IHC;IF;ELISA
<b>Gene Name</b>	GUCY1A3
<b>Protein Name</b>	Guanylate cyclase soluble subunit alpha-3
<b>Immunogen</b>	The antiserum was produced against synthesized peptide derived from human GCS-alpha-1. AA range:374-423
<b>Specificity</b>	GCS- $\alpha$ -1 Polyclonal Antibody detects endogenous levels of GCS- $\alpha$ -1 protein.
<b>Formulation</b>	Liquid in PBS containing 50% glycerol, 0.5% BSA and 0.02% sodium azide.
<b>Source</b>	Polyclonal, Rabbit,IgG
<b>Purification</b>	The antibody was affinity-purified from rabbit antiserum by affinity-chromatography using epitope-specific immunogen.
<b>Dilution</b>	WB: 1/500 - 1/2000. IHC: 1/100 - 1/300. ELISA: 1/40000.. IF 1:50-200
<b>Concentration</b>	1 mg/ml
<b>Purity</b>	$\geq 90\%$
<b>Storage Stability</b>	-20°C/1 year
<b>Synonyms</b>	GUCY1A3; GUC1A3; GUCSA3; GUCY1A1; Guanylate cyclase soluble subunit alpha-3; GCS-alpha-3; GCS-alpha-1; Soluble guanylate cyclase large subunit
<b>Observed Band</b>	77kD
<b>Cell Pathway</b>	Cytoplasm .
<b>Tissue Specificity</b>	Detected in brain cortex and lung (at protein level).
<b>Function</b>	catalytic activity:GTP = 3',5'-cyclic GMP + diphosphate.,enzyme regulation:Activated by nitric oxide in the presence of magnesium or manganese ions.,miscellaneous:There are two types of guanylate cyclases: soluble forms and membrane-associated receptor forms.,similarity:Belongs to the adenylyl cyclase class-4/guanylyl cyclase family.,similarity:Contains 1 guanylate cyclase domain.,subunit:Heterodimer of an alpha and a beta chain.,
<b>Background</b>	Soluble guanylate cyclases are heterodimeric proteins that catalyze the conversion of GTP to 3',5'-cyclic GMP and pyrophosphate. The protein encoded by this gene is an alpha subunit of this complex and it interacts with a beta subunit to form the guanylate cyclase enzyme, which is activated by nitric oxide. Several transcript variants encoding a few different isoforms have been found for this gene. [provided by RefSeq, Jan 2012],



**matters needing attention**

Avoid repeated freezing and thawing!

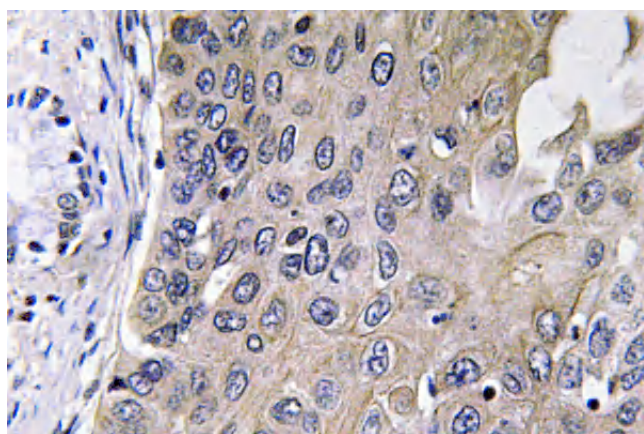
**Usage suggestions**

This product can be used in immunological reaction related experiments. For more information, please consult technical personnel.

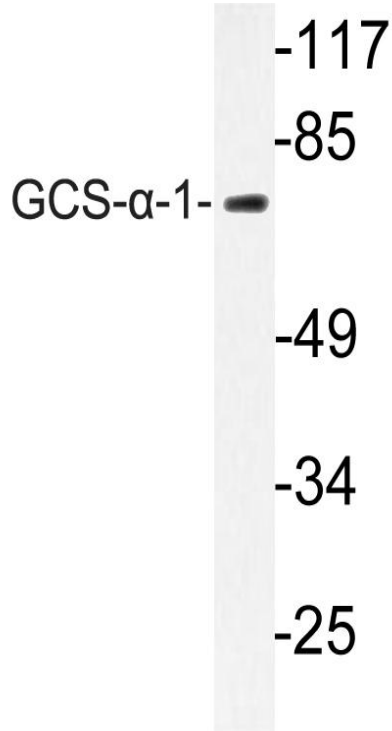
## Products Images



Western Blot analysis of various cells using GCS- $\alpha$ -1 Polyclonal Antibody



Immunohistochemistry analysis of GCS- $\alpha$ -1 antibody in paraffin-embedded human lung carcinoma tissue.



Western blot analysis of lysate from A549 cells, using GCS-α-1 antibody.